

If I, Like Abraham,...

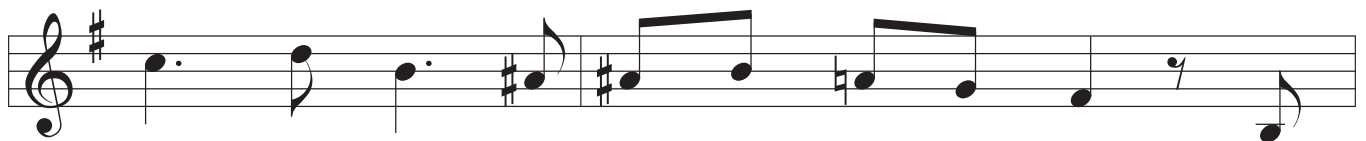
(For unison/octave voices)

Slowly, but with feeling

Text by Abdul-Baha'



If I, like A-bra-ham, through flames must go, Or



yet like John a blood-stained road must run; If,



Jo - seph-like, Thou'd cast me in a well, Or shut me up wi-thin a

Gradually Slowing



pri-son cell - or make me e'en as poor as Ma-ry's Son -

(In Time)



I will not go from Thee, But e-ver stand My



soul and bo-dy bowed to Thy com-mand.